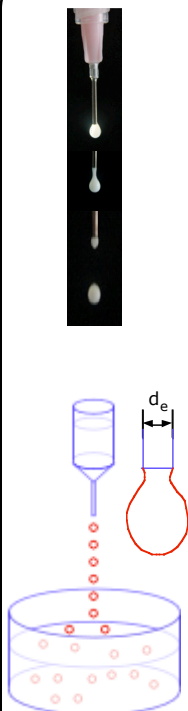
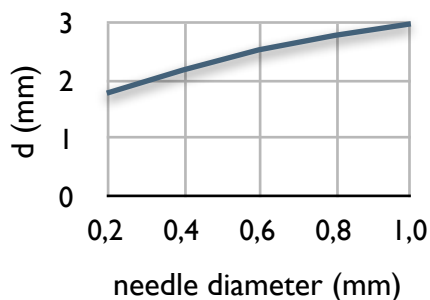


Simple dripping

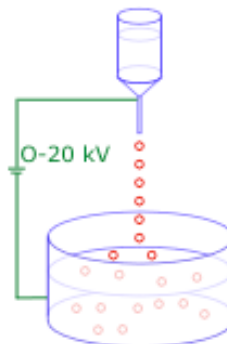


$$\frac{\pi}{6} d^3 g = m g = \pi d_e \gamma$$

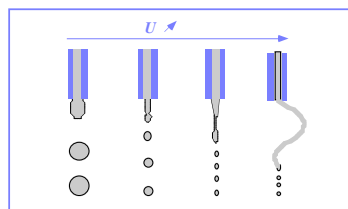
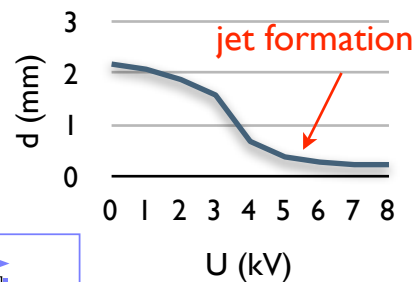


- Large capsules
- Low flow (50 mL/h)

Electro-dripping



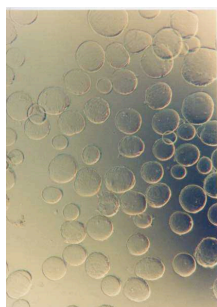
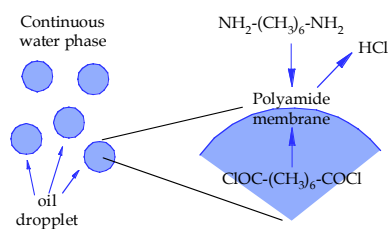
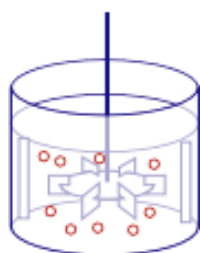
$$mg = \pi d_e \gamma_o \left(1 - \frac{U^2}{U_{cr}^2} \right)$$



- Small capsules
- Low flow

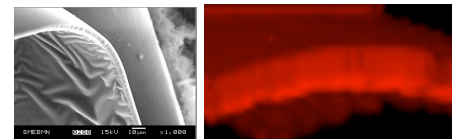
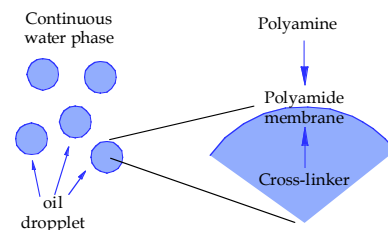
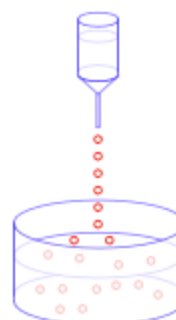
- Tool to develop formulation
- Biomedical applications

Interfacial Polymerization



- Very fast reaction
- pH > 12
- Chloroform/cyclohexane
- Porous membrane

Interfacial Cross-linking



- Fast reaction
- pH ~ 6.5
- Vegetal oil
- dense membrane